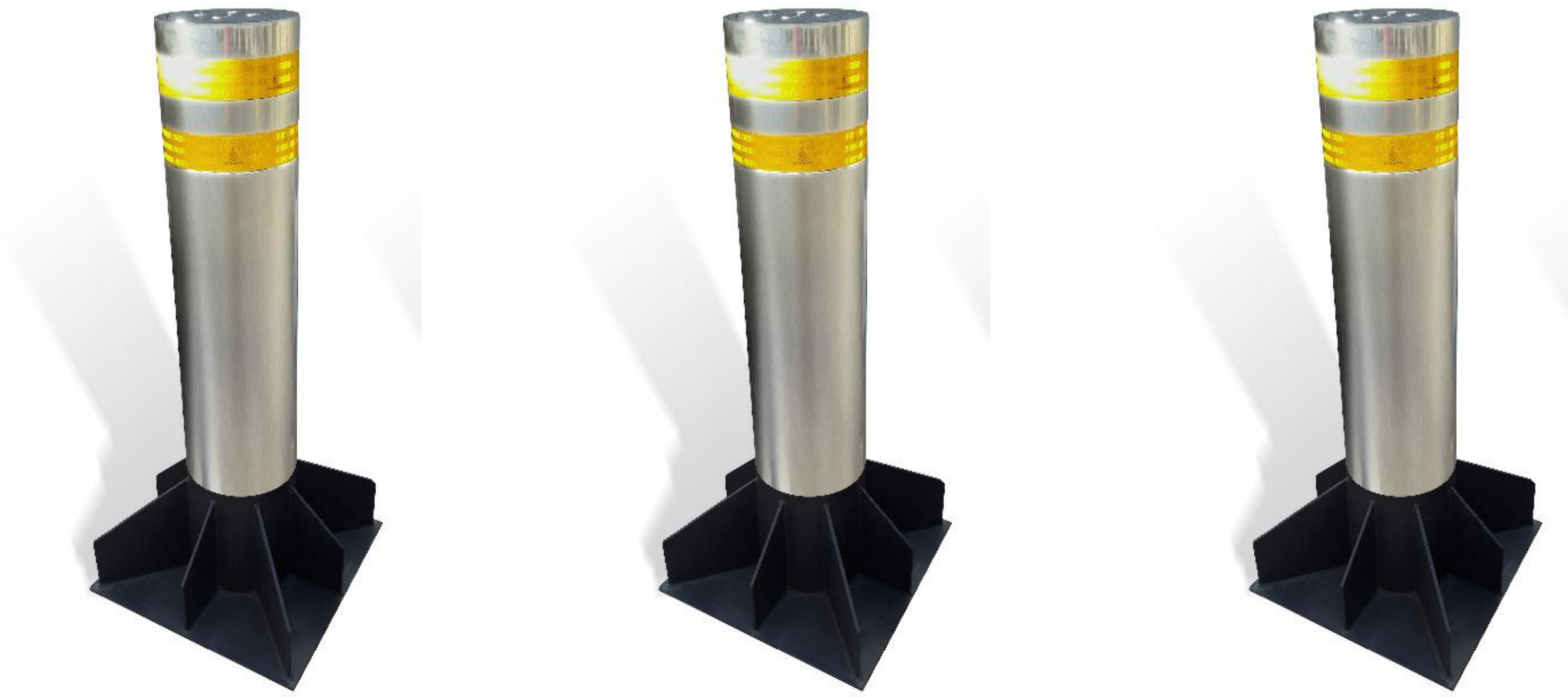


GENERAL VIEW OF FXB (STAINLESS STEEL)



GENERAL DESCRIPTION

Optima fix bollards are designed for vehicle entrances, army, industrial, governmental and commercial buildings or streets that are closed to vehicle traffic permanently.

FEATURES IN FIXED BOLLARD

- ⇒ The diameter of the bollard is Ø100-168-219-273-324-355mm.
- ⇒ Height is 500 mm to 1250mm. The embedded portion is 300mm.
- ⇒ Material: Carbon steel Core with AISI 316 Stainless Steel Sleeve.
- ⇒ Two lines of reflective strips (with optional colors).

OPTIONAL ACCESSORIES

- ⇒ Different color options.
- ⇒ Flashing light on top of bollard.
- ⇒ Decorative top flanges.
- ⇒ Stop sign with mounting pedestal.

MAIN BODY FOUNDATION DIMENSIONS

