

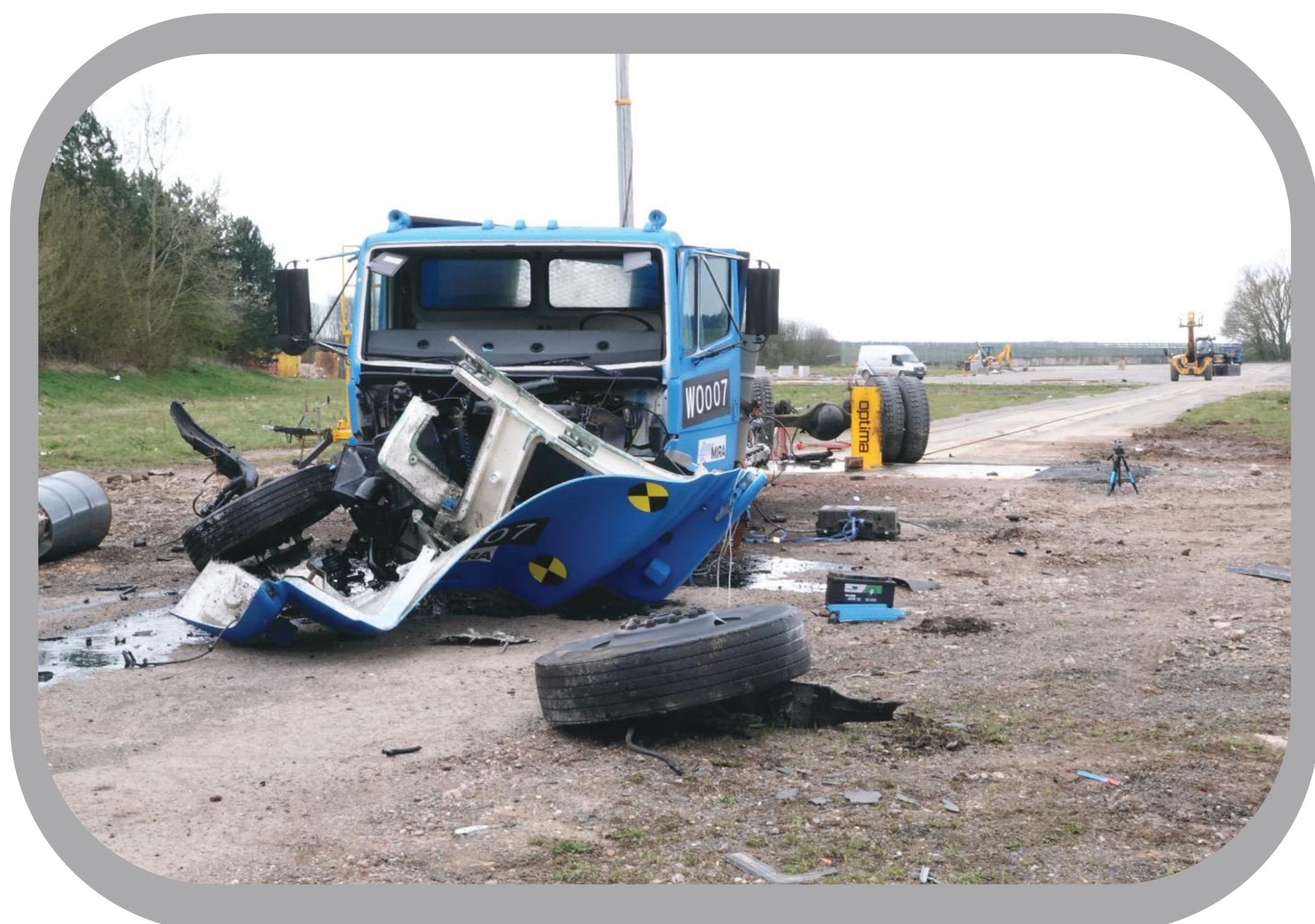
GENERAL VIEW OF FXB-CT-R5



GENERAL DESCRIPTION

Optima Crash Tested Fixed Bollards are designed for vehicle entrances, military, industrial, governmental and commercial buildings or streets which are closed to vehicle traffic permanently.

AFTER THE CRASH TEST



STEEL STRUCTURE

- ⇒ Diameter of the bollard is Ø350mm.
- ⇒ Height is 900mm.
- ⇒ Foundation depth is 695mm.
- ⇒ Steel structure for anchoring the bollards to the concrete.
- ⇒ Optima crash tested fix bollards are crash tested to ASTM F2656/F2656M-18a M50.
- ⇒ Bollards are galvanized and epoxy painted (any RAL colour upon request) or available with AISI 316 stainless steel cover.

OPTIONAL ACCESSORIES

- ⇒ Different color options.
- ⇒ Flashing light on top of bollard.
- ⇒ Decorative top flanges.
- ⇒ Stop sign with mounting pedestal.

MAIN BODY FOUNDATION DIMENSIONS

