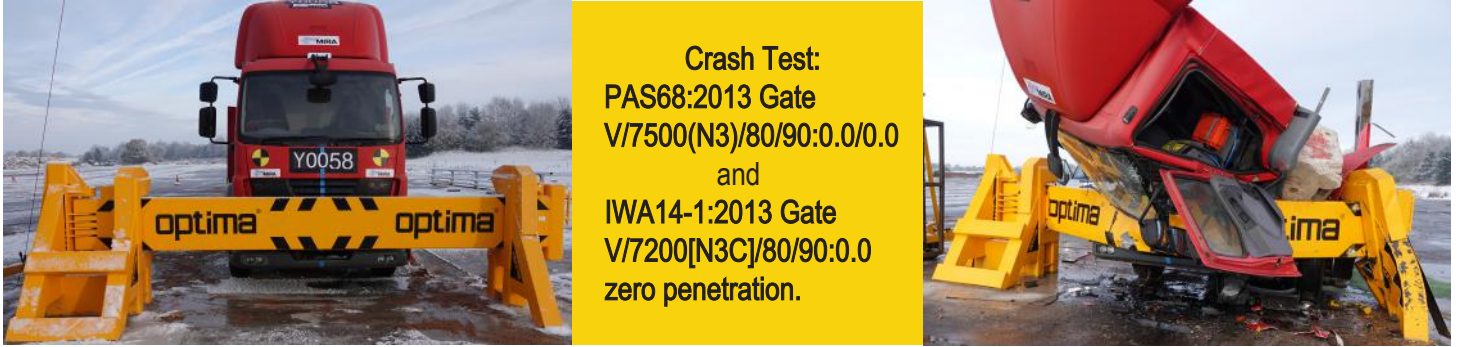


## MAB-CT



### GENERAL DESCRIPTION

Optima MAB-CT crash-tested barriers are designed especially for entrances where there is a threat suicide vehicle attack or for the entrances that have high-security requirements. This product is preferred popularly at sites where there is no electricity. Besides, it's definitely more economical when compared to hydraulic-driven barriers. As the control of the manual arm barrier is by manpower, the vehicle may slow down but from a security point of view, manual arm barriers have the same strength as the hydraulic driven barriers.



### SYSTEM SPECIFICATIONS

Two support columns supporting the crash beam

Manual control with manpower

Opening and closing parallel to the road plane for convenience

Extremely strong and withstand impact design

Lockable in open and closed position

Environmental conditions: -15 °C / +65 °C , %95 humidity

## ACCESSORIES

Yellow-Black Color

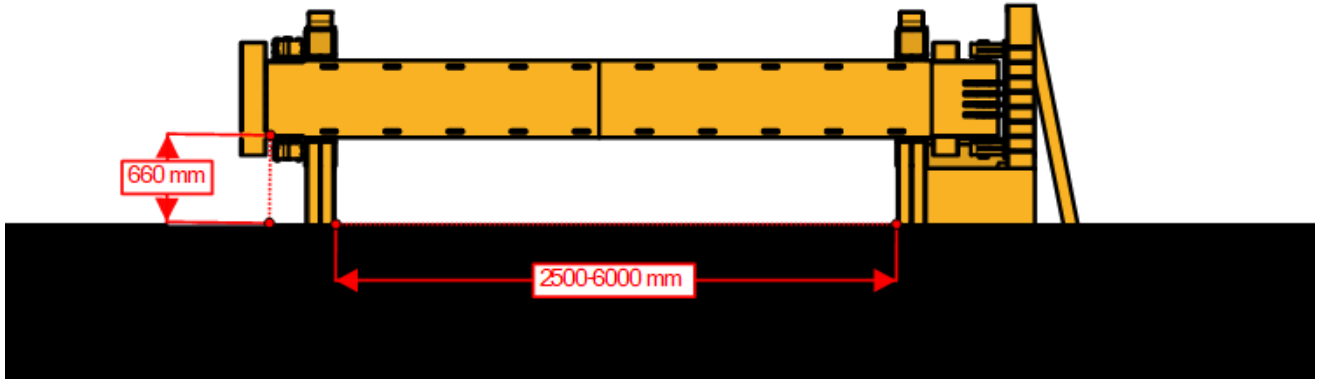
Different Color Options \*

STOP Sign On Arm \*

*(Accessories marked with (\*) are optional.)*

## MAIN BODY MEASUREMENTS

### FRONT VIEW



### SIDE VIEW

